

MASTER
CONICAL ENGINEERING

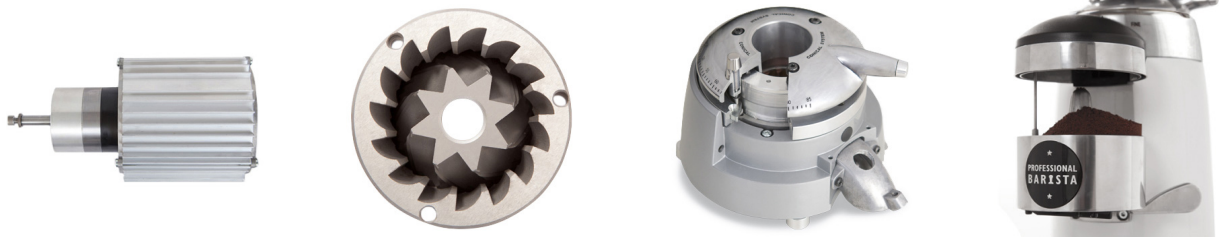
K10 Master Conic PB

BARISTA RULE

MOTOR 820 W
CONICAL BURRS Ø 68 MM

KEY SPECIFICATIONS

Motor output	820	W
Revolutions per minute	345	rpm
Ø Burrs	Conical 68	mm
Espresso point production	17	Kg/h
Hopper capacity	1,700	gr
Height x width x depth	680 x 215 x 400	mm
Net weight	20.50	Kg



KEY FEATURES

- ◆ “Parallel System” grind regulator lock
- ◆ 4 cm height riser with side air vents
- ◆ Double fan
- ◆ Ergonomic doser lid for easy removal
- ◆ Special Barista doser without builtin tamper
- ◆ Aluminum star doser with high efficiency sweepers
- ◆ Full aluminum grinding collar adjustment and fork
- ◆ Aluminum portafilter rest
- ◆ High resistance power switch
- ◆ Illuminated on/off switch
- ◆ Auto-Stop

