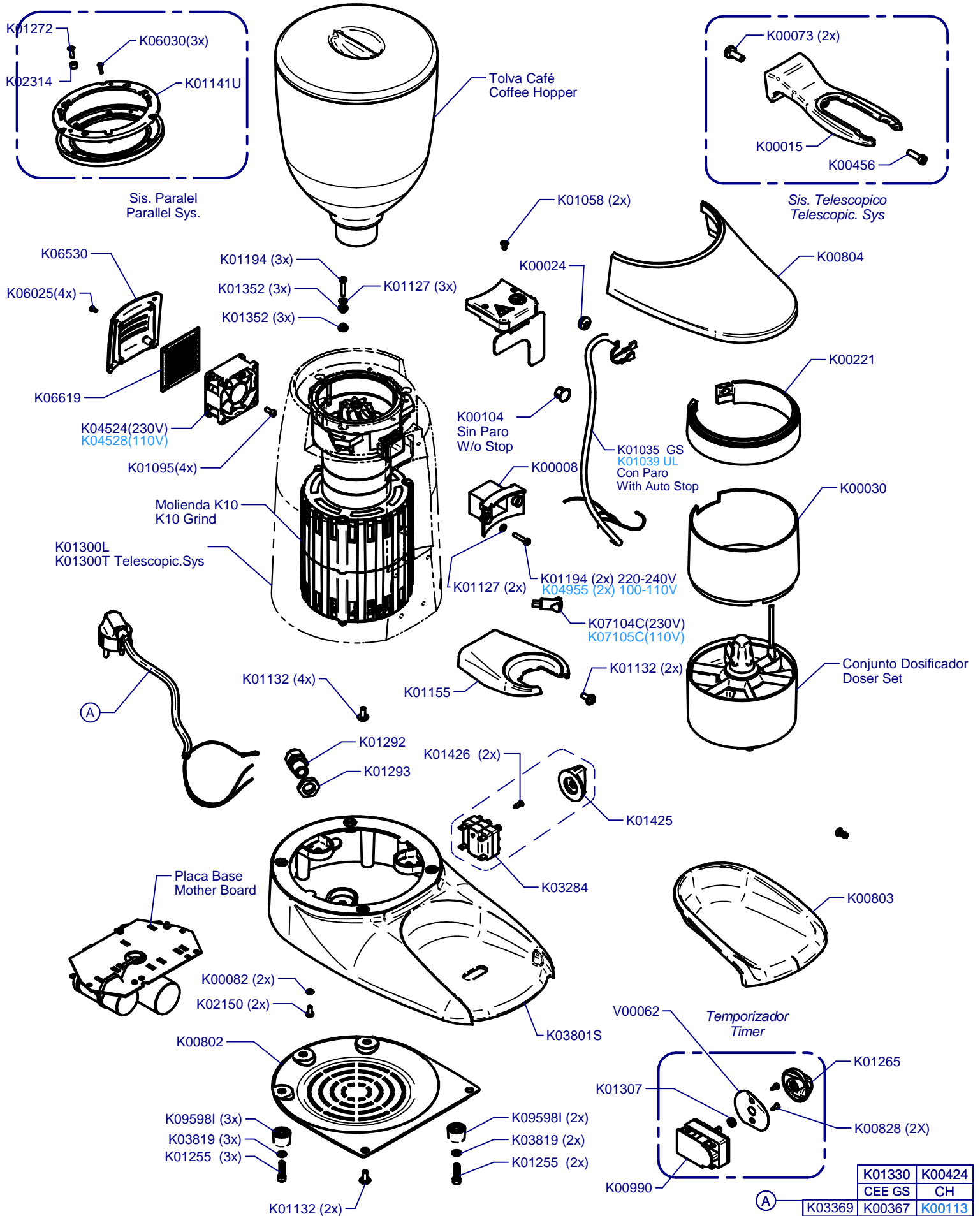


K10 Conic Traditional

Updated 19/04/2022

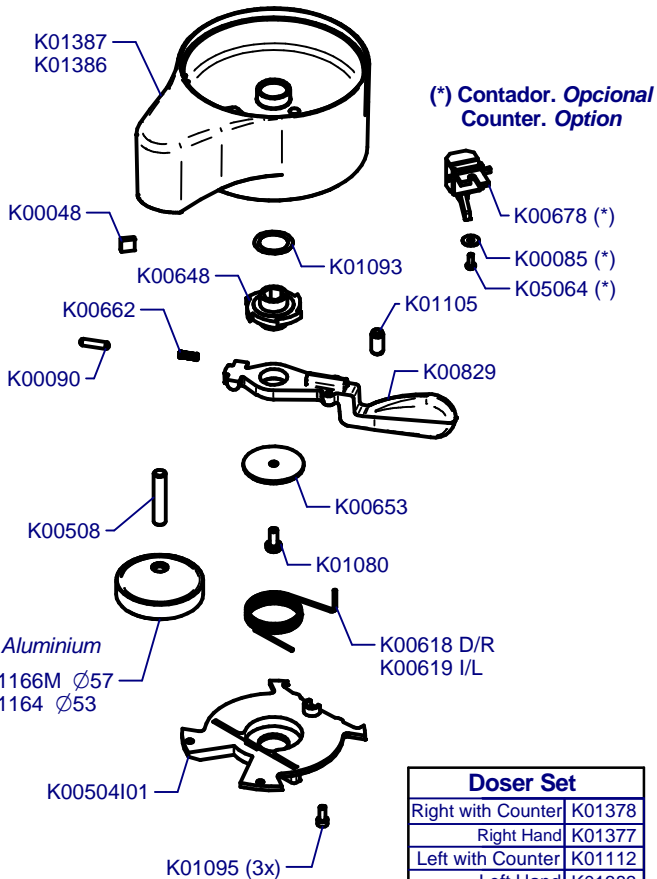
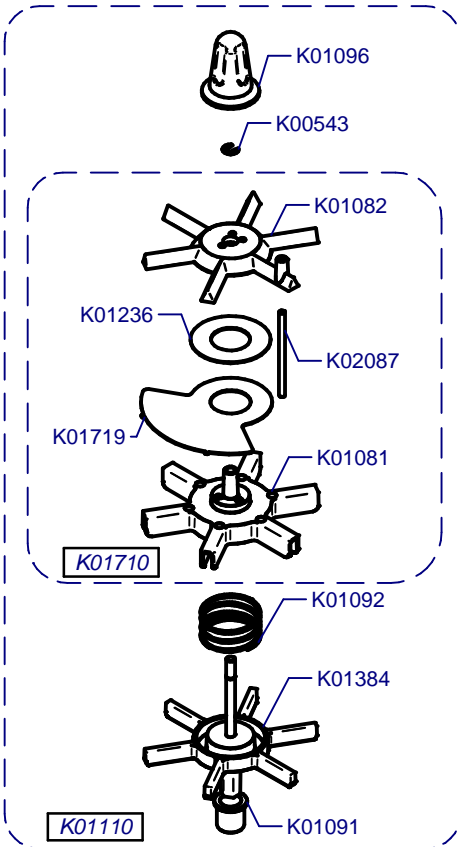


| | |
|--------|---------------|
| K01330 | K00424 |
| CEE GS | CH |
| K03369 | K00367 |
| AUST | UK |
| | K00113 |
| | USA |

K10 Conic Traditional

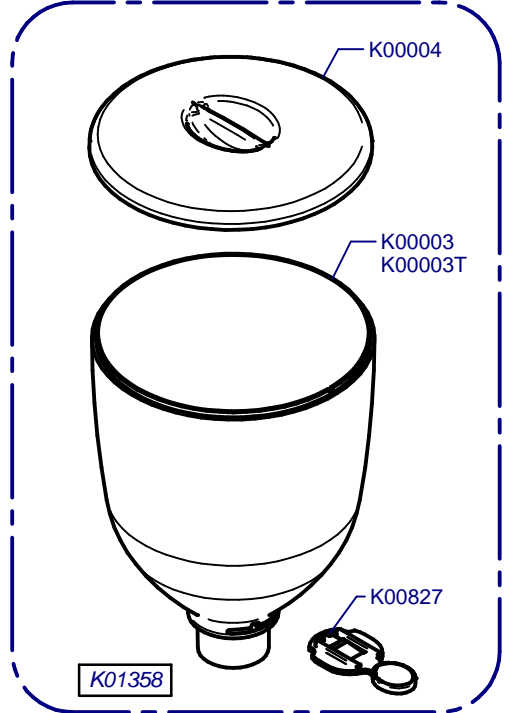
Updated 19/04/2022

Dosificador Aluminio/ Aluminium Doser

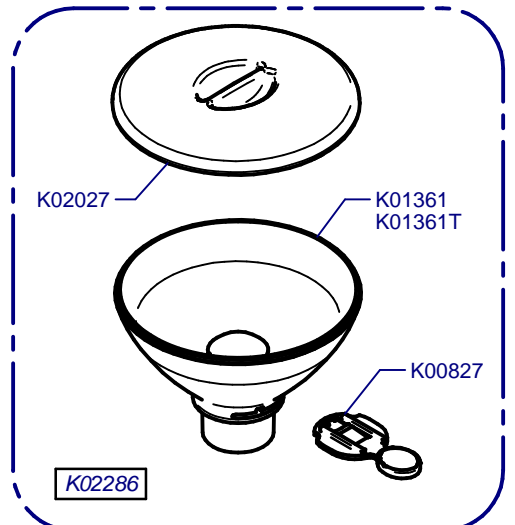


| Doser Set | |
|--------------------|--------|
| Right with Counter | K01378 |
| Right Hand | K01377 |
| Left with Counter | K01112 |
| Left Hand | K01383 |

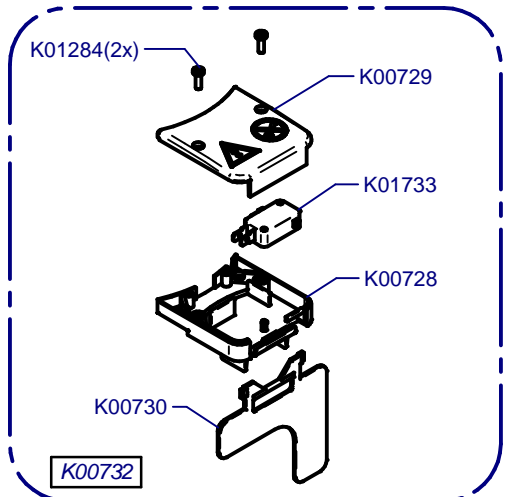
Tolva Café / Coffee Hopper



Tolva Café 275gr / Coffee Hopper 275gr



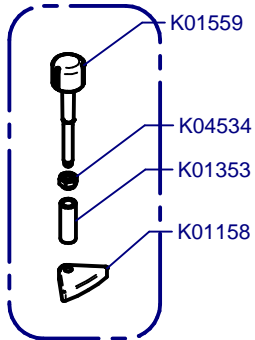
Paro Automático / Auto Stop



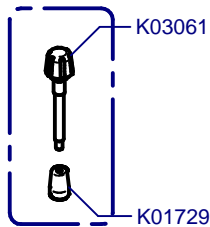
K10 Conic Traditional

Updated 19/04/2022

Molienda / Grind



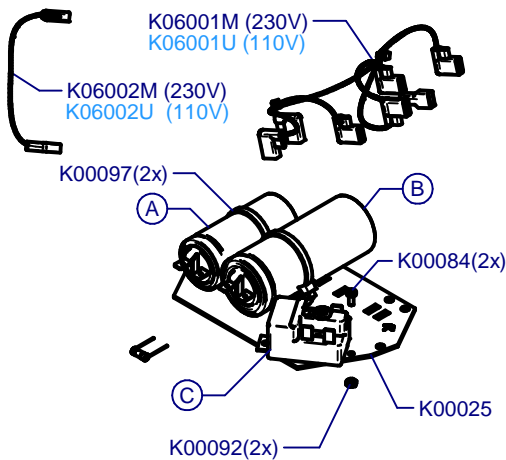
Sis. Paralel
Parallel Sys.



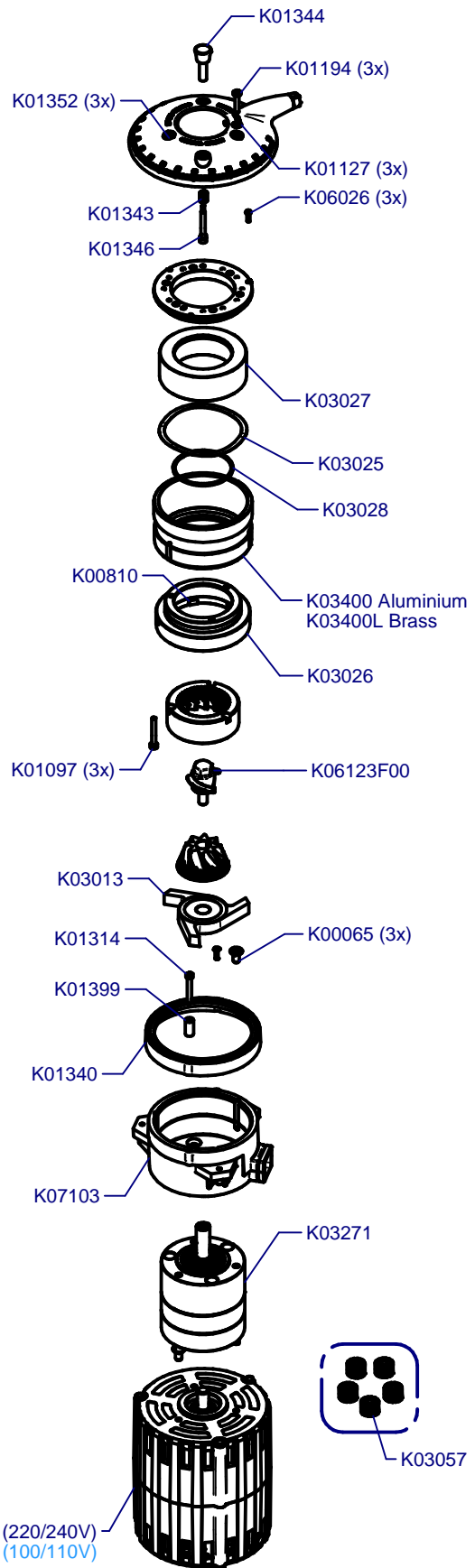
Sis. Micrometrico
Micrometric Sys.

(*) **Sis. Punto a Punto**
Stepped Sys.

Placa Base / Mother Board



| C | | A | | B | |
|--------|----------|--------|--------|----------|--|
| K00496 | 230-240V | K05108 | K04574 | 230-240V | |
| K00488 | 220V | K05108 | K04574 | 220V | |
| K03175 | 110V | K03174 | K03878 | 110V | |
| K03824 | 100V | K03825 | K03877 | 100V | |



K03772 (220/240V)
K03776 (100/110V)

K03057